



TECHNICAL DATA SHEET

Steplite Easygrip O4 white/blue

General information

| Size range | |
|---|-----------|
| • EU | 36 - 48 |
| • UK | 3.5 - 13 |
| • US | 4 - 15 |
| The testresults in this technical datasheet are performed on size EU 42, UK 8, US 9 | |
| Weight / pair | |
| • Safety level: Non-safety | ± 1 302 g |
| Colours | |
|  | |
| white - blue | |

Upper

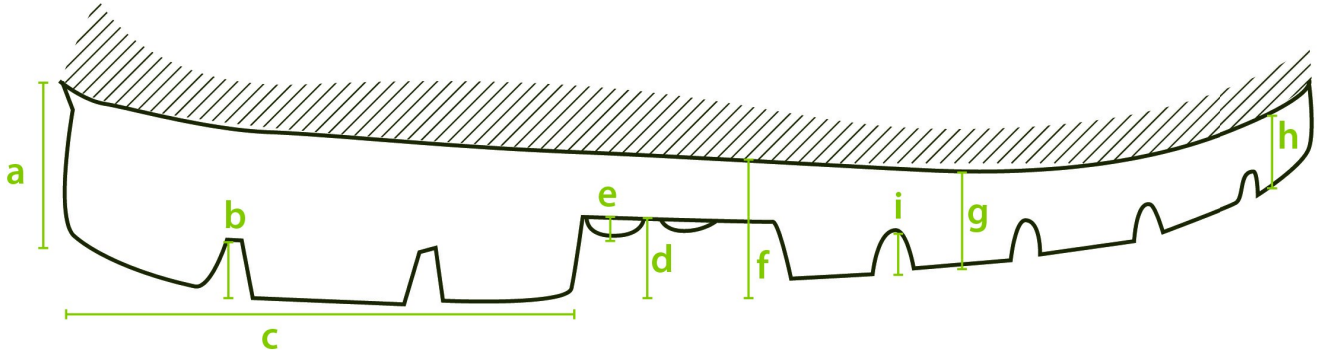
| A. Dimensions | |
|-----------------|---|
| • Height | outer measure: 38.0 cm |
| | cutting edge: 31.0 cm |
| • Foot length | outer measure: 30.5 cm |
| | inner measure: 28.0 cm |
| B. Thickness | |
| • Upper edge | 2.8 - 3.2 mm |
| • Calf | 2.9 - 3.1 mm |
| • Shinbone | 2.8 - 2.9 mm |
| • Ankle | 3.5 - 3.9 mm |
| • Heel | 3.9 - 5.4 mm |
| C. Raw material | |
| | NEOTANE (proprietary polyurethane compound) |

| | | |
|-------------------------------------|-----------------------------------|-------------------------|
| D. Density | | |
| | 0.65 - 0.70 g/ml | |
| E. Tensile strength | | |
| (incl. lining) | 10 ± 2 N/mm ² | |
| F. Elongation | | |
| (incl. lining) | 600 +/- 100% | |
| G. Hardness | | |
| | 43 +/- 2 Sh A | |
| H. Tear strength | | |
| (incl. lining) N/mm | 10.0 ± 2.0 N/mm | |
| I. Aging | | |
| (incl. lining) | 7 days at 70 °C | 14 days at 70 °C |
| • Tensile strength | 11.6 Mpa | 9.0 Mpa |
| • Elongation | 580 ± 20% | 600 ± 20% |
| • Tear strength | 11.4 N/mm | 9.0 N/mm |
| J. Chemical resistance | | |
| | see detailed list | |
| K. Environmental temperature | | |
| • Maximum | ± 100 °C | |
| • Minimum | Cold insulation down to -20 °C | |

Lining

| | |
|--------------------|--------------------------------|
| A. Material | |
| | PU coating on polyester fabric |
| B. Seams | |
| | Knitted seams |

Outsole profile



A. Dimensions

| | | |
|--------------------------|-----|---------|
| • Heel | | |
| • Thickness | (a) | 32.0 mm |
| • Profile depth | (b) | 8.6 mm |
| • Length | (c) | 90.3 mm |
| • Width | | 81.2 mm |
| • Middle foot | | |
| • Height | (d) | 12.0 mm |
| • Ladder anti-slip grips | (e) | 2.0 mm |
| • Outsole | | |
| • Thickness | (f) | 23.3 mm |
| | (g) | 20.0 mm |
| | (h) | 17.9 mm |
| • Profile depth | (i) | 6.7 mm |

B. Raw material

NEOTANE (proprietary polyurethane compound)

C. Density

0.65 - 0.70 g/ml

D. Mechanical characteristics

See upper (E)-(F)-(H)

E. Energy absorption of the seat region

25-35 J (requirement ≥ 20 J)



F. Antistatic

dry: $1 \times 10^8 - 1 \times 10^9$ Ohm


wet: $1 \times 10^7 - 1 \times 10^9$ Ohm

| | |
|------------------------------------|-----------------------------------|
| G. Abrasion resistance | |
| | 50 mm ³ |
| H. Hardness | |
| | 60 +/- 10 Sh A |
| I. Footwear slip resistance | |
| | SRC |
| J. Chemical resistance | |
| | see detailed list |

Certificates

| | |
|--|---|
|  | EN ISO 20347:2012 2001737-02-86 |
|  | EN ISO 20347:2012 AB0321/19214-01/E00-00 |

Accessories

| | | |
|-------------------------|---------------|--|
| Insole | | |
| Three layers | | |
| • Toplayer | woven textile |  |
| • Colour | green | |
| • Thickness | 0.70 mm | |
| • Interlayer | needle felt | |
| • Colour | cyan blue | |
| • Thickness | 3.0 mm | |
| • Bottom | gel latex | |
| • Colour | black | |
| • Thickness | 1.0 mm | |
| Washable at 30°C | | |