




TECHNICAL DATA SHEET

Litefield O4 green/brown

General information

Size range	
• EU	36 - 47
• UK	3.5 - 12
• US	4 - 14
The testresults in this technical datasheet are performed on size EU 42, UK 8, US 9	
Weight / pair	
• Safety level: Non-safety	± 1 420 g
Colours	
	
green - brown	

Upper

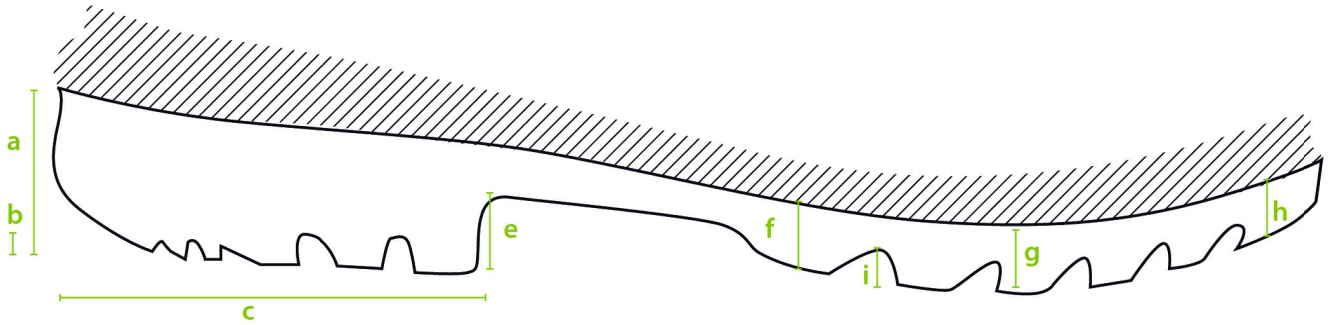
A. Dimensions	
• Height	outer measure: 42.5 cm
• Foot length	outer measure: 30.0 cm
	inner measure: 28.1 cm
B. Thickness	
• Upper edge	2.1 - 2.4 mm
• Calf	2.5 - 2.8 mm
• Shinbone	2.2 - 3.0 mm
• Ankle	2.4 - 3.5 mm
• Heel	2.6 - 4.6 mm
C. Raw material	
	NEOTANE (proprietary polyurethane compound)

D. Density		
	0.65 - 0.70 g/ml	
E. Tensile strength		
(incl. lining)	10 ± 2 N/mm ²	
F. Elongation		
(incl. lining)	600 +/- 100%	
G. Hardness		
	43 +/- 2 Sh A	
H. Tear strength		
(incl. lining) N/mm	10.0 ± 2.0 N/mm	
I. Aging		
(incl. lining)	7 days at 70 °C	14 days at 70 °C
• Tensile strength	11.6 Mpa	9.0 Mpa
• Elongation	580 ± 20%	600 ± 20%
• Tear strength	11.4 N/mm	9.0 N/mm
J. Chemical resistance		
	see detailed list	
K. Environmental temperature		
• Maximum	± 100 °C	
• Minimum	Cold insulation down to -20 °C	

Lining

A. Material	
	PU coating on polyester fabric
B. Seams	
	Knitted seams

Outsole profile



A. Dimensions

• Heel

• Thickness	(a)	24.0 mm
• Profile depth	(b)	7.8 mm
• Length	(c)	84.3 mm
• Width		73.3 mm

• Middle foot

• Height	(e)	14.5 mm
• Ladder anti-slip grips		2.6 mm

• Outsole

• Thickness	(f)	18.8 mm
	(g)	13.0 mm
	(h)	13.0 mm
• Profile depth	(i)	5.9 mm

B. Raw material

	NEOTANE (proprietary polyurethane compound)
--	---

C. Density

	0.65 - 0.70 g/ml
--	------------------

D. Mechanical characteristics

	See upper (E)-(F)-(H)
--	-----------------------

E. Energy absorption of the seat region

	20 J (requirement \geq 20 J)
--	--------------------------------

F. Antistatic

	dry: 1×10^8 - 1×10^9 Ohm
	wet: 1×10^7 - 1×10^9 Ohm

G. Abrasion resistance

	50 mm ³
--	--------------------

H. Hardness

60 +/- 10 Sh A

I. Chemical resistance

[see detailed list](#)

Accessories

Insole

Three layers

• Toplayer	woven textile
• Colour	green
• Thickness	0.70 mm
• Interlayer	needle felt
• Colour	cyan blue
• Thickness	3.0 mm
• Bottom	gel latex
• Colour	black
• Thickness	1.0 mm



Washable at 30°C