




# TECHNICAL DATA SHEET

## StepliteX ThermoProtec S5 green/black

### General information

Size range	
• EU	37 - 48
• UK	4 - 13
• US	5 - 15
The testresults in this technical datasheet are performed on size EU 42, UK 8, US 9	
Weight / pair	
• Safety level: Non-metallic toe cap & midsole	± 2 120 g
Colours	
	
green - black	

### Upper

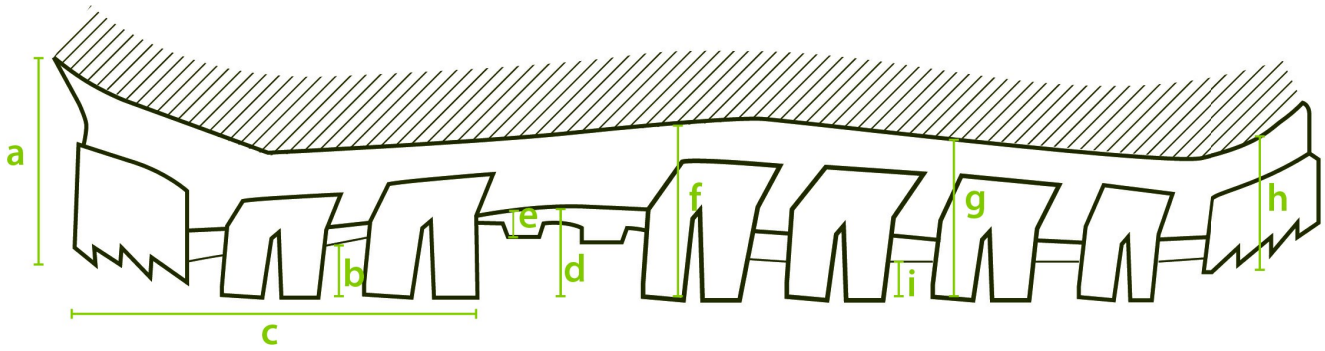
A. Dimensions	
• Height	outer measure: 36.5 - 39.5 cm
	cutting edge: 27.0 - 29.5 cm
• Foot length	outer measure: 31.5 cm
	inner measure: 28.0 cm
B. Thickness	
• Upper edge	2.6 - 3.1 mm
• Calf	2.8 - 3.4 mm
• Shinbone	2.8 - 3.6 mm
• Ankle	4.2 - 5.3 mm
• Heel	5.6 - 6.0 mm
C. Raw material	
	NEOTANE (proprietary polyurethane compound)

<b>D. Density</b>		
	0.65 - 0.70 g/ml	
<b>E. Tensile strength</b>		
(incl. lining)	10 ± 2 N/mm <sup>2</sup>	
<b>F. Elongation</b>		
(incl. lining)	600 +/- 100%	
<b>G. Hardness</b>		
	43 +/- 2 Sh A	
<b>H. Tear strength</b>		
(incl. lining) N/mm	10.0 ± 2.0 N/mm	
<b>I. Aging</b>		
(incl. lining)	<b>7 days at 70 °C</b>	<b>14 days at 70 °C</b>
• Tensile strength	11.6 Mpa	9.0 Mpa
• Elongation	580 ± 20%	600 ± 20%
• Tear strength	11.4 N/mm	9.0 N/mm
<b>J. Chemical resistance</b>		
	<a href="#">see detailed list</a>	
<b>K. Environmental temperature</b>		
• Maximum	± 100 °C	
• Minimum	Cold insulation down to -40 °C	

## Lining

<b>A. Material</b>	
	PU coating on polyester fabric
<b>B. Seams</b>	
	Welded and knitted seams

## Outsole profile



### A. Dimensions

#### • Heel

• Thickness	(a)	47.3 mm
• Profile depth	(b)	12.6 mm
• Length	(c)	102.9 mm
• Width		87.3 mm

#### • Middle foot

• Height	(d)	15.8 mm
• Ladder anti-slip grips	(e)	5.8 mm

#### • Outsole

• Thickness	(f)	43.1 mm
	(g)	33.7 mm
	(h)	26.0 mm
• Profile depth	(i)	6.7 mm

### B. Raw material

NEOTANE (proprietary polyurethane compound)

### C. Density

0.65 - 0.70 g/ml

### D. Mechanical characteristics

See upper (E)-(F)-(H)

### E. Energy absorption of the seat region

40-50 J (requirement  $\geq 20$  J)

### F. Antistatic

dry:  $1 \times 10^8 - 1 \times 10^9$  Ohm





wet:  $1 \times 10^7 - 1 \times 10^9$  Ohm

<b>G. Abrasion resistance</b>	
	50 mm <sup>3</sup>
<b>H. Hardness</b>	
	60 +/- 10 Sh A
<b>I. Footwear slip resistance</b>	
	SRC
<b>J. Chemical resistance</b>	
	<a href="#">see detailed list</a>

## Safety

	Standard	Required	Type	Result
<b>Toe cap &amp; midsole</b>				
Nail penetration resistance	EN ISO 20345:2011	> 1100 N	Non-metallic	1100 N
Impact resistance (200J)	EN ISO 20345:2011	> 14.0 mm	Non-metallic	14.0 mm
Impact resistance (125J)	CSA Z195-14	> 12.7 mm	Non-metallic	21.5 mm
Impact resistance at -18 °C (125J)	CSA Z195-14	> 12.7 mm	Non-metallic	28.1 mm
Compression resistance	EN ISO 20345:2011	> 14.0 mm	Non-metallic	18.0 mm
Compression resistance	ASTM F2413-18	> 12.7 mm	Non-metallic	20.8 mm
Width of toe cap	outer measure: 48.0 mm			
Height of toe cap	outer measure: 95.0 mm			
Toe cap	Composite material such as fiberglass			

## Certificates

	EN ISO 20345:2011 1908037-02-86
	EN ISO 20345:2011 AB0321/19224-01/E00-00
	CSA Z195-14 70048629
	ASTM F2413-18 70048629

## Accessories

### Thermo-moulded footbed

Two layers

• Toplayer	woven textile
• Colour	black
• Thickness	0.70 mm
• Bottom	PU foam
• Colour	black
• Thickness	3.0 - 7.0 mm



**Washable at 30°C**