




TECHNICAL DATA SHEET

Steplite EasyGrip S4 green/black

General information

Size range	
• EU	36 - 48
• UK	3.5 - 13
• US	4 - 15
The testresults in this technical datasheet are performed on size EU 42, UK 8, US 9	
Weight / pair	
• Safety level: Steel toe cap	± 1 490 g
Colours	
	
green - black	

Upper

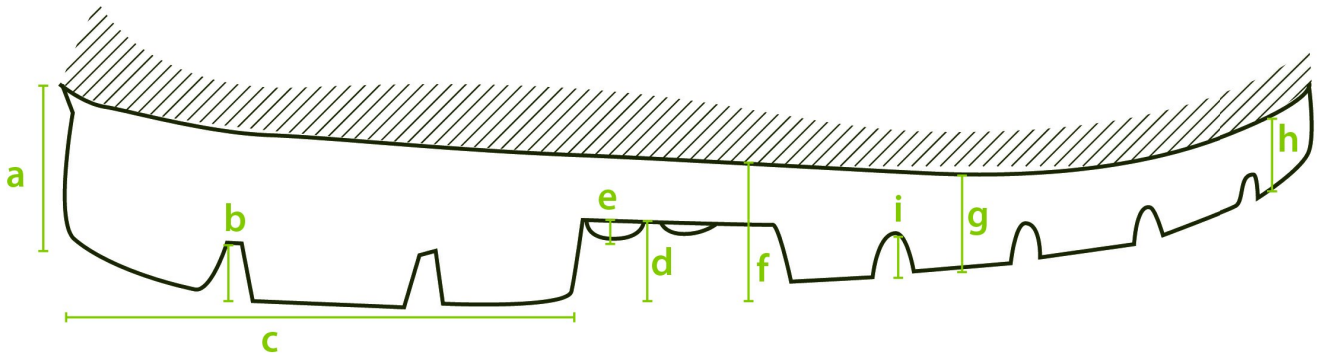
A. Dimensions	
• Height	outer measure: 38.0 cm
	cutting edge: 31.0 cm
• Foot length	outer measure: 30.5 cm
	inner measure: 28.0 cm
B. Thickness	
• Upper edge	2.8 - 3.2 mm
• Calf	2.9 - 3.1 mm
• Shinbone	2.8 - 2.9 mm
• Ankle	3.5 - 3.9 mm
• Heel	3.9 - 5.4 mm
C. Raw material	
	NEOTANE (proprietary polyurethane compound)
D. Density	
	0.65 - 0.70 g/ml

E. Tensile strength		
(incl. lining)	10 ± 2 N/mm ²	
F. Elongation		
(incl. lining)	600 +/- 100%	
G. Hardness		
	43 +/- 2 Sh A	
H. Tear strength		
(incl. lining) N/mm	10.0 ± 2.0 N/mm	
I. Aging		
(incl. lining)	7 days at 70 °C	14 days at 70 °C
• Tensile strength	11.6 Mpa	9.0 Mpa
• Elongation	580 ± 20%	600 ± 20%
• Tear strength	11.4 N/mm	9.0 N/mm
J. Chemical resistance		
	see detailed list	
K. Environmental temperature		
• Maximum	± 100 °C	
• Minimum	Cold insulation down to -20 °C	

Lining

A. Material	
	PU coating on polyester fabric
B. Seams	
	Knitted seams

Outsole profile



A. Dimensions

• Heel

• Thickness	(a)	32.0 mm
• Profile depth	(b)	8.6 mm
• Length	(c)	90.3 mm
• Width		81.2 mm

• Middle foot

• Height	(d)	12.0 mm
• Ladder anti-slip grips	(e)	2.0 mm

• Outsole

• Thickness	(f)	23.3 mm
	(g)	20.0 mm
	(h)	17.9 mm
• Profile depth	(i)	6.7 mm

B. Raw material

NEOTANE (proprietary polyurethane compound)

C. Density

0.65 - 0.70 g/ml

D. Mechanical characteristics

See upper (E)-(F)-(H)

E. Energy absorption of the seat region

25-35 J (requirement ≥ 20 J)

F. Antistatic

dry: $1 \times 10^8 - 1 \times 10^9$ Ohm

wet: $1 \times 10^7 - 1 \times 10^9$ Ohm

G. Abrasion resistance





50 mm³

H. Hardness	
	60 +/- 10 Sh A
I. Footwear slip resistance	
	SR
J. Chemical resistance	
	see detailed list

Safety

	Standard	Required	Type	Result
Toe cap				
Impact resistance (200J)	EN ISO 20344:2022+A1:2024 EN ISO 20345:2022+A1:2024	> 14.0 mm	Metallic	20.0 mm
Impact resistance (125J))	CSA Z195-14	> 12.7 mm	Metallic	13.2 mm
Impact resistance at -18 °C (125J)	CSA Z195-14	> 12.7 mm	Metallic	17.3 mm
Compression resistance	EN ISO 20344:2022+A1:2024 EN ISO 20345:2022+A1:2024	> 14.0 mm	Metallic	20.0 mm
Compression resistance	ASTM F2413-18	> 12.7 mm	Metallic	24.3 mm
Width of toe cap	outer measure: 44.2 mm			
Height of toe cap	outer measure: 87.3 mm			
Toe cap	Steel			

Certificates

	EN ISO 20344:2022+A1:2024 EN ISO 20345:2022+A1:2024 2409248-02-86
	EN ISO 20345:2011 AB0321/19215-01/E00-00
	CSA Z195-14 70048629
	ASTM F2413-18 70048629
	AS 2210.3:2019 SMKH21341

Accessories

Insole

Three layers

• Toplayer	woven textile
• Colour	green
• Thickness	0.70 mm
• Interlayer	needle felt
• Colour	cyan blue
• Thickness	3.0 mm
• Bottom	gel latex
• Colour	black
• Thickness	1.0 mm



Washable at 30°C