



TECHNICAL DATA SHEET

StepliteX ThermoProtec S4 white/blue

General information

Size range	
• EU	37 - 48
• UK	4 - 13
• US	5 - 15
The testresults in this technical datasheet are performed on size EU 42, UK 8, US 9.	
Weight / pair	
• Safety level: Non-metallic toe cap	± 69.98 oz
Colors	
	
white - blue	

Upper

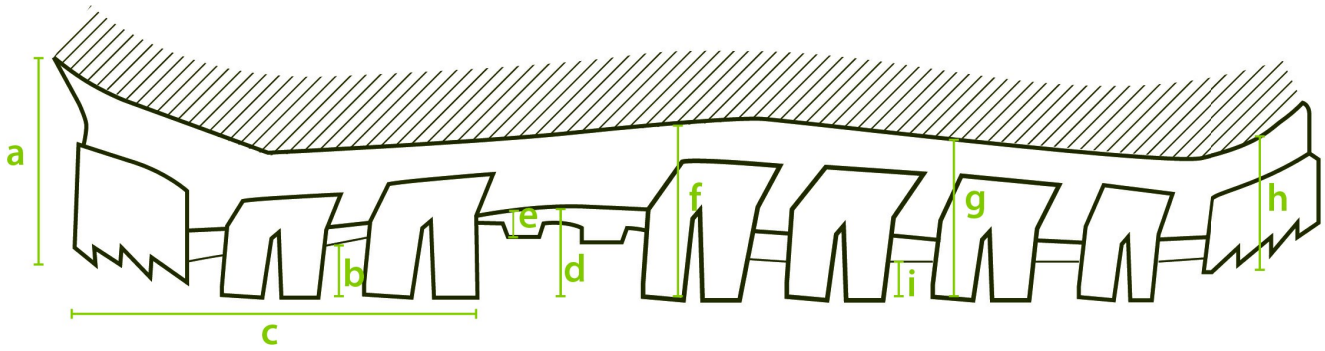
A. Dimensions	
• Height	outer measure: 14.4 - 15.6 in
	cutting edge: 10.6 - 11.6 in
• Foot length	outer measure: 12.4 in
	inner measure: 11.0 in
B. Thickness	
• Upper edge	0.10 - 0.12 in
• Calf	0.11 - 0.13 in
• Shinbone	0.11 - 0.14 in
• Ankle	0.17 - 0.21 in
• Heel	0.22 - 0.24 in
C. Raw material	
	NEOTANE (proprietary polyurethane compound)

D. Density		
	86.8 - 93.5 oz/gallon	
E. Tensile strength		
(incl. lining)	1450 ± 290 psi	
F. Elongation		
(incl. lining)	600 +/- 100%	
G. Hardness		
	43 +/- 2 Sh A	
H. Tear strength		
(incl. lining) lbf/in	57.1 ± 11.4 lb/in	
I. Aging		
(incl. lining)	7 days at 158 °F	14 days at 158 °F
• Tensile strength	1682.4 psi	1305.3 psi
• Elongation	580 ± 20%	600 ± 20%
• Tear strength	65.1 lb/in	51.4 lb/in
J. Chemical resistance		
	see detailed list	
K. Environmental temperature		
• Maximum	± 212 °F	
• Minimum	Cold insulation down to -40 °F	

Lining

A. Material	
	PU coating on polyester fabric
B. Seams	
	Welded and knitted seams

Outsole profile



A. Dimensions

• Heel		
• Thickness	(a)	1.9 in
• Profile depth	(b)	0.50 in
• Length	(c)	4.1 in
• Width		3.4 in
• Middle foot		
• Height	(d)	0.62 in
• Ladder anti-slip grips	(e)	0.23 in
• Outsole		
• Thickness	(f)	1.7 in
	(g)	1.3 in
	(h)	1.0 in
• Profile depth	(i)	0.26 in

B. Raw material

NEOTANE (proprietary polyurethane compound)

C. Density

6.5 - 7.0 ppg (imp.)

D. Mechanical characteristics

See upper (E)-(F)-(H)

E. Energy absorption of the seat region

40-50 J (requirement ≥ 20 J)

F. Antistatic

dry: 1×10^8 - 1×10^9 Ohm





wet: 1×10^7 - 1×10^9 Ohm

G. Abrasion resistance	
	0.0031 in ³
H. Hardness	
	60 +/- 10 Sh A
I. Footwear slip resistance	
	SRC
J. Chemical resistance	
	see detailed list

Safety

	Standard	Required	Type	Result
Toe cap				
Impact resistance (125J)	CSA Z195-14	> 0.50 in	Non-metallic	0.81 in
Impact resistance at -0.4 °F (125J)	CSA Z195-14	> 0.50 in	Non-metallic	1.2 in
Compression resistance	EN ISO 20345:2011	> 0.55 in	Non-metallic	0.63 in
Compression resistance	ASTM F2413-18	> 0.50 in	Non-metallic	0.85 in
Width of toe cap	outer measure: 1.9 in			
Height of toe cap	outer measure: 3.7 in			
Toe cap	Composite material such as fiberglass			

Certificates

	EN ISO 20345:2011 2004188-02-86
	EN ISO 20345:2011 AB0321/19222-01/E00-00
	CSA Z195-14 70048629
	ASTM F2413-18 70048629

Accessories

Thermo-moulded footbed

Two layers

• Toplayer	woven textile
• Color	black
• Thickness	0.03 in
• Bottom	PU foam
• Color	black
• Thickness	0.12 - 0.28 in



Washable at 86 °F